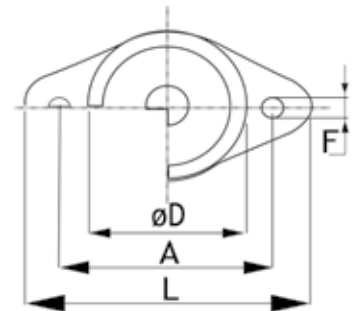
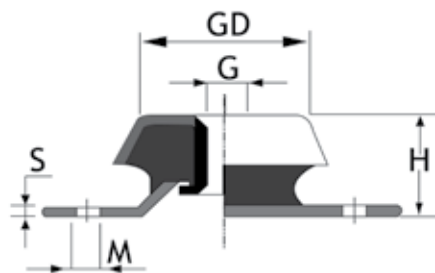


ANTI VIBRATION CAPTIVE MOUNTS



<p>Captive Mounts are designed with an integral overload stop which controls the movement of equipment during transit and provides a fully fail safe arrangement. They are suitable for both Mobile & Static Applications.</p> <p>H = Total Height L = Total Length D1 = Top Diameter D2 = Bottom Diameter G = Thread Size A = Hole - Hole Distance F x M = Hole Size S = Metal Thickness</p>	<p>Features:</p> <ul style="list-style-type: none"> • It is a universal mounting and is popular in wide range of applications. • Cost Effective. • High performing & easy to install. • The rubber is used in shear/compression providing optimum performance and offers vibration reduction of upto 95%. • The metal top cap provides protection from contaminants such as Oil & Fuel, of load rating 20Kg to 4000Kg. 	<p>Applications:</p> <ul style="list-style-type: none"> • Static and mobile generators sets. • Pumps, compressors, centrifugal fans and blowers. • Railway equipment compartments. • Marine engines (no thrust) and gearboxes • Electronic control panels. <p>Materials: Natural Rubber</p>
---	--	--

Article No.	H (mm)	L (mm)	D1 (mm)	D2(mm)	G	A (mm)	FxM (mm)	S (mm)
VCM 10631	31	106	50	60	M12	75	8.3 x 16	3
VCM 10635	35	106	50	60	M12	75	8.3 x 16	2
VCM 11035	35	110	50	65	M10/M12	73	8.3 x 16	3
VCM 12035.3	35.3	120	47	63.5	M10/M12	100	11 x 11	2
VCM 12830	30	128	59	77	M10	110	9 x 9	2
VCM 12845	45	138	73.5	92	M16	110	10.5 x 10.5	3
VCM 14436	36	144	70	93	M10	124	10 x 10	2.5
VCM 16940S	40	169	77	105	M16	140	14 x 19	3
VCM 17238	38	172	81	106	M16	138	14 x 18	3
VCM 19050	50	190	83	108	M16	160	16.5 x 16.5	5
VCM 19241	40.5	192	90	115	M16	158	14 x 14	3
VCM 21648	48	216	118	145	M16	182	14 x 19	4
VCM 21652S	52	216	134	155	M16	182	14 x 19	4
VCM 19066	66.5	190	140	181	M20 (Square Base Flange)	160	14 x 14	4
VCM 18086S	86	180	141	184	M20 (Square Base Flange)	146	14 x 14	5
VCM 220105	105	220	160	220	M24 (Square Base Flange)	180	18 x 18	6

This information is for guidance only. Customers are recommended to contact us for further technical information on products and applications. We reserve the right to alter specifications or withdraw products without notice.

ANTI VIBRATION CAPTIVE MOUNTS

Article No:	45 ShA		60 ShA		70 ShA	
	Maximum Load (kg)	Static Deflection (mm)	Maximum Load (kg)	Static Deflection (mm)	Maximum Load (kg)	Static Deflection (mm)
VCM 10631	94	3.0	170	3.0	-	-
VCM 10635	63	3.0	114	3.0	-	-
VCM 11035	70	3.5	124	3.5	196	3.5
VCM 12830	120	3.1	220	3.0	-	-
VCM 12845	350	4.0	600	4.0	750	3.0
VCM 12035.3	60	4.0	118	4.0	-	-
VCM 14436	180	3.5	330	3.0	-	-
VCM 17238	240	3.5	450	3.5	-	-
VCM 16940S	200	6.0	400	6.0	600	6
VCM 19241	425	4.0	690	4.0	-	-
VCM 12845	350	4.0	600	4.0	750	3.0
VCM 21648	750	5.5	1100	5.0	-	-
VCM 19050	400	3.0	750	3.0	1400	3.0
VCM 21652S	480	10	800	10	1700	10
VCM 19066 (Square Base Flange)	1500	9.0	2300	8.0	3200	6.4
VCM 18086S (Square Base Flange)	850	15	1500	15	-	-
VCM 220105 (Square Base Flange)	1600	16	3400	12	5012	5.5

This information is for guidance only. Customers are recommended to contact us for further technical information on products and applications. We reserve the right to alter specifications or withdraw products without notice.

© BULWARK. Telephone:+971 6 534 5881 Fax:+971 6 534 5883 Email: admin@ismatrubber.com Website: www.ismatrubber.co