

# ANTI VIBRATION CYLINDRICAL MOUNTS

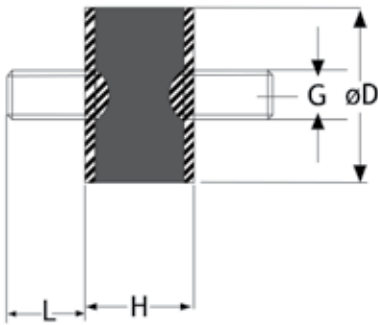


**Description:**  
 AV MOUNTS RANGE  
 TYPE A -MALE/MALE  
 TYPE B -MALE/FEMALE  
 TYPE C -FEMALE/FEMALE  
 TYPE D -MALE  
 TYPE E- FEMALE

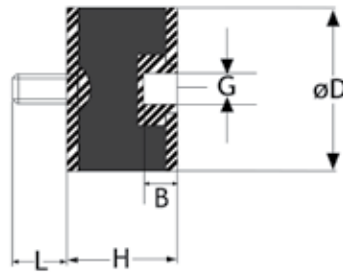
**Material:**  
 Natural Rubber (NR)

**Applications:**

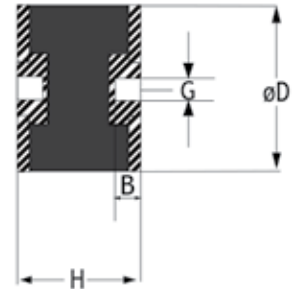
- Exhaust Systems
- Small Fans
- Instrument Panels.
- HVAC
- Motors
- Electronic Control Panels



TYPE - A



TYPE - B



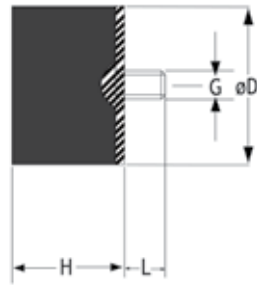
TYPE - C

Size / part No. (D x H) (mm)	ShA.	Max Compressive Load (kg)	Static Deflection (mm)	Thread size	
				BOLT	NUT
VC 20 X 25	30	6.0	3.0	M6 X 1G X 17L	M6 X 1G X 6 DEEP (B)
	40	8.0	3.0		
	50	11	3.0		
	60	18	4.0		
	70	21	3.0		
VC 25 x 20	30	30	3.5	M6 x 1G x 13L	M6 x 1G x 6 DEEP (B)
	40	45	3.5		
	50	60	3.5		
VC 25 x 22	30	50	3.5	M8 x 1.25G x 20L	M8 x 1.25G x 6 DEEP (B)
VC 25 x 30	30	37	3.0	M8 x 1.25G x 20L	M8 x 1.25G x 6 DEEP (B)
	40	52	3.0		
	50	73	3.0		
VC 30 x 22	30	64	3.5	M8 x 1.25G x 25L	M8 x 1.25G x 6 DEEP (B)
VC 30 x 30	30	22	3.0	M8 x 1.25G x 21L	M8 x 1.25G x 6 DEEP (B)
VC 35 X 22	30	64	3.0	3/8" BSW x 38L	3/8" BSW x 6 DEEP (B)
VC 35 x 25	30	16	1.5	3/8" BSW x 38L	3/8" BSW x 6 DEEP (B)
	40	21	1.5		
	50	40	1.5		
	60	65	1.5		
VC 38 x 25	30	70	4.0	M8 x 1.25G x 17L	M8 x 1.25G x 6 DEEP (B)
	40	110	4.0		
	50	175	4.0		

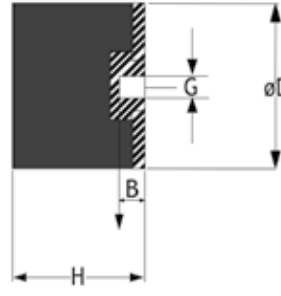
This information is for guidance only. Customers are recommended to contact us for further technical information on products and applications. We reserve the right to alter specifications or withdraw products without notice.

© BULWARK. Telephone:+971 6 534 5881 Fax:+971 6 534 5883 Email: admin@ismatrubber.com Website: www.ismatrubber.co

# ANTI VIBRATION CYLINDRICAL MOUNTS



TYPE - D



TYPE - E

Size / part No. (D x H) (mm)	ShA.	Max Compressive Load (kg)	Static Deflection (mm)	Thread size	
				BOLT	NUT
VC 40 x 28	40	146	4.5	M10 x 1.5G x 25L	M10 x 1.5G x 6 DEEP (B)
VC 40 x 30	40	60	5.0	M8 x 1.25G x 25L	M8 x 1.25G x 6 DEEP (B)
VC 40 x 40	30	43	6.0	M10 x 1.5G 38L	M10 x 1.5G x 10 DEEP (B)
	40	59	6.0		
	50	82	6.0		
VC 50 x 19 B3	-	75	4.0	M10 x 25	-
VC 50 x 40	30	65	5.0	M10 X 1.5G X 22L	M10 X 1.5G X 12 DEEP (B)
	40	110	5.0		
	50	150	5.0		
VC 50 x 45	30	106	7.0	M10 x 1.5G X 25L	M10 x 1.5G x 12 DEEP (B)
VC 50 x 50	30	76	7.0	M10 X 1.5G X 22L	M10 X 1.5G X 12 DEEP (B)
	40	100	7.0		
	50	120	7.0		
VC 55 x 38	30	58	3.0	3/8" BSW x 34L	3/8" BSW x 10 DEEP (B)
	40	84	3.0		
	50	117	3.0		
VC 60 x 45	30	214	8.0	M10 x 1.5G X 19L	M10 x 1.5G x 10 DEEP (B)
	40	311	8.0		
	50	453	8.0		
VC 60 x 50	30	110	6.5	M12 x 1.75G x 27L	M12 x 1.75G x 15 DEEP (B)
	40	145	6.5		
	50	185	6.5		
VC 60 x 60	30	110	8.0	M12 x 1.75G x 30L	M12 x 1.75G x 20 DEEP (B)
	40	150	8.0		
	50	200	8.0		
VC 63 x 36	30	115	5.0	1/2" BSW x 33L	1/2" BSW x 10 DEEP (B)
VC 75 x 25 B3	30	100	3.0	M12 x 47	-
VC 75 x 55	30	158	6.0	M8 x 1.75G x 37L	M12 x 1.75G x 15 DEEP (B)
	40	180	6.0		
	50	290	6.0		
VC 100 x 55	30	320	6.0	M16 x 2G x 43L	M16 x 2G x 20 DEEP (B)
VC 100 x 75	30	280	10	M12 x 1.75G x 30L	M12 x 1.75G x 20 DEEP (B)
	40	390	10		
	50	520	10		
VC 100 x 90	30	285	12	M12 x 1.75G x 30L	M12 x 1.75G x 20 DEEP (B)
	40	400	12		
	50	540	12		

Please refer to our website for detailed size charts of all types in Cylindrical Mounts.

This information is for guidance only. Customers are recommended to contact us for further technical information on products and applications. We reserve the right to alter specifications or withdraw products without notice.

© BULWARK. Telephone:+971 6 534 5881 Fax:+971 6 534 5883 Email: admin@ismatrubber.com Website: www.ismatrubber.co